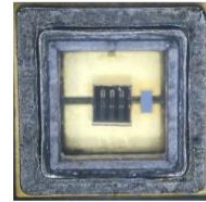




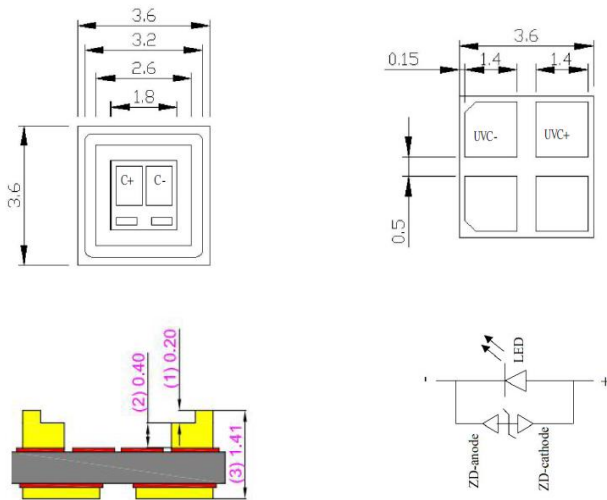
## Datasheet No.107U KLHP3535UVC 0.6W UV LED LAMP

### Features

- CMH real inorganic package
- Dimension 3.70mmX3.70mmX1.60mm
- Long operating life
- Deep ultraviolet
- High reliability
- Superior ESD Protection
- RoHS Compliant



### Package Dimensions



### Applications

- Sterilization and disinfection
- Fluorescent Spectroscopy
- Water Purification
- Air Purification

Tolerance:  $\pm 0.20\text{mm}$

UVC LED Code	UVC Description	UVC Image
KLUCL1-10	KLUCL1-10 12V, 18V, 24V, 175-180mA 750Mj/min	
KLUCL2-10	KLUCL2-10 12V, 18V, 24V, 175-180mA 1500Mj/min	
KLUCL3-10	KLUCL3-10 12V, 18V, 24V, 175-180mA 2250Mj/min	
KLUCL4-10	KLUCL4-10 12V, 18V, 24V, 175-180mA 3000Mj/min	
KLUCL6-30	KLUCL6-30 12V, 18V, 24V, 600mA 4500Mj/min	

## Characteristics of UVC LED

Electrical/ Optical Characteristics At (IF =175-180mA, Ta=25°C,RH=40%)

Parameter	Symbol	Units	Values
Peak Wavelength	$\lambda_p$	nm	275-285
Radiant Flux	$\phi_e$	mW	0.6W-1W
Forward Voltage	$V_f$	V	12-24V
Thermal Resistance	$R_{th}$	°C/W	<10
Spectrum Half Width	$\Delta\lambda$	nm	9.2
View Angle	$2\theta_{1/2}$	deg	120

**Absolute Maximum Rating (Ta=25°C,RH=40%)**

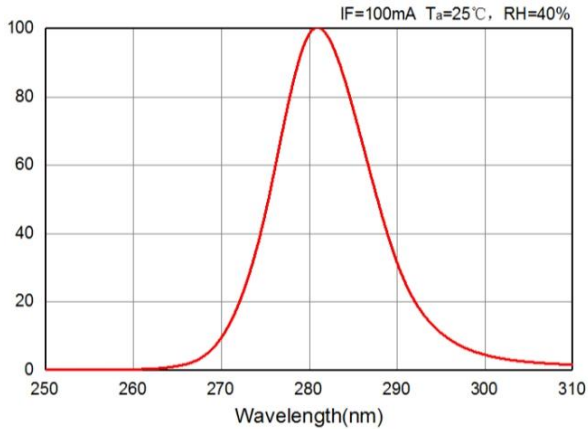
Parameter	Symbol	Units	Values
Maximum Rating forward Current	$I_{Fmax}$	mA	175-180
Maximum Rating Junction Temperature	$T_{jmax}$	°C	120
Operating Temperature Range	$T_{opr}$	°C	-10~+85
Storage Temperature Range	$T_{stg}$	°C	-40~+100

### **Note:**

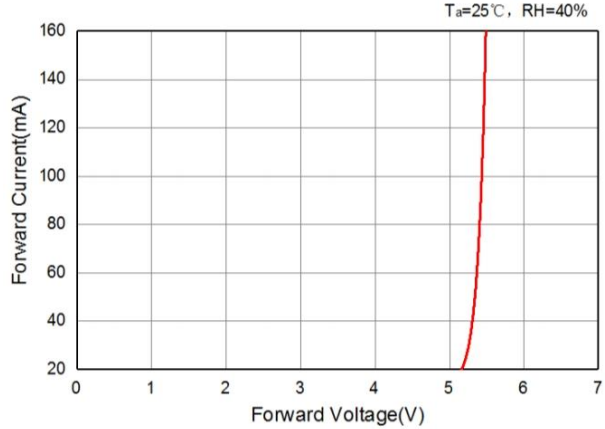
Operating the LED beyond the listed maximum ratings may affect device's reliability and cause permanent damage. These or any other conditions beyond those indicated under recommended operating conditions are implied. the exposure to the absolute maximum rated conditions may affect device reliability.

# Characteristic Curves

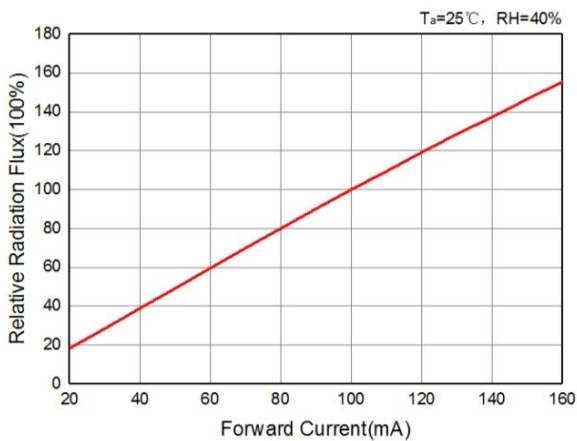
## 1. Relative Spectrum Power Distribution



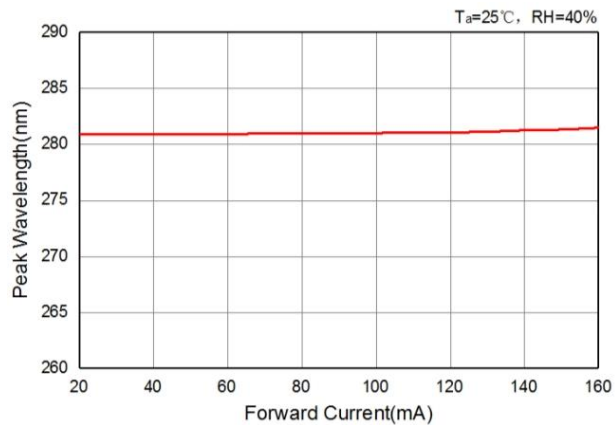
## 2. Forward Voltage vs Forward Current



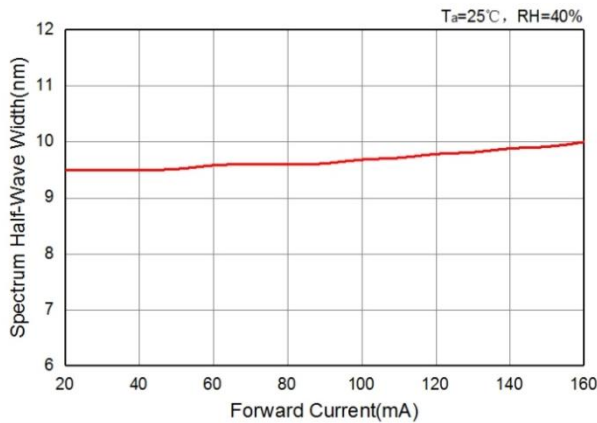
## 3. Relative Radiation Flux vs. forward Current



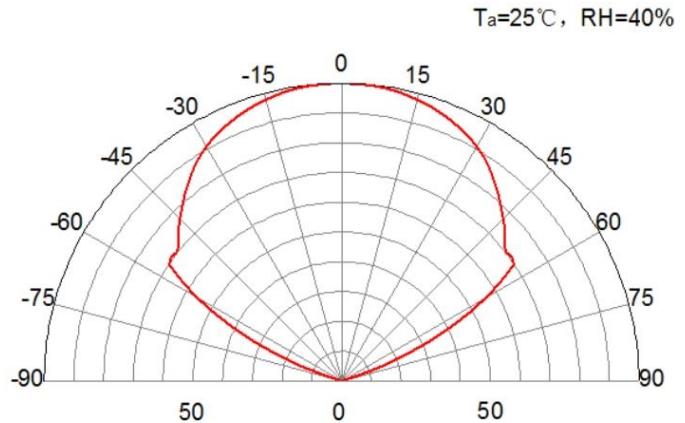
## 4. Peak Wavelength vs forward Current



## 5. Spectrum half-wave width vs forward Current



## 6. Spatial Distribution Graph



**LEDCHIP INDUS PRIVATE LIMITED**

29A&B Electronics Complex, Kushaiguda Hyderabad 500 062 Ph 91-40-27123555

kwalitypolywa@gmail.com, sales@kwalitiyindia.com www.LEDchipIndus.com

